

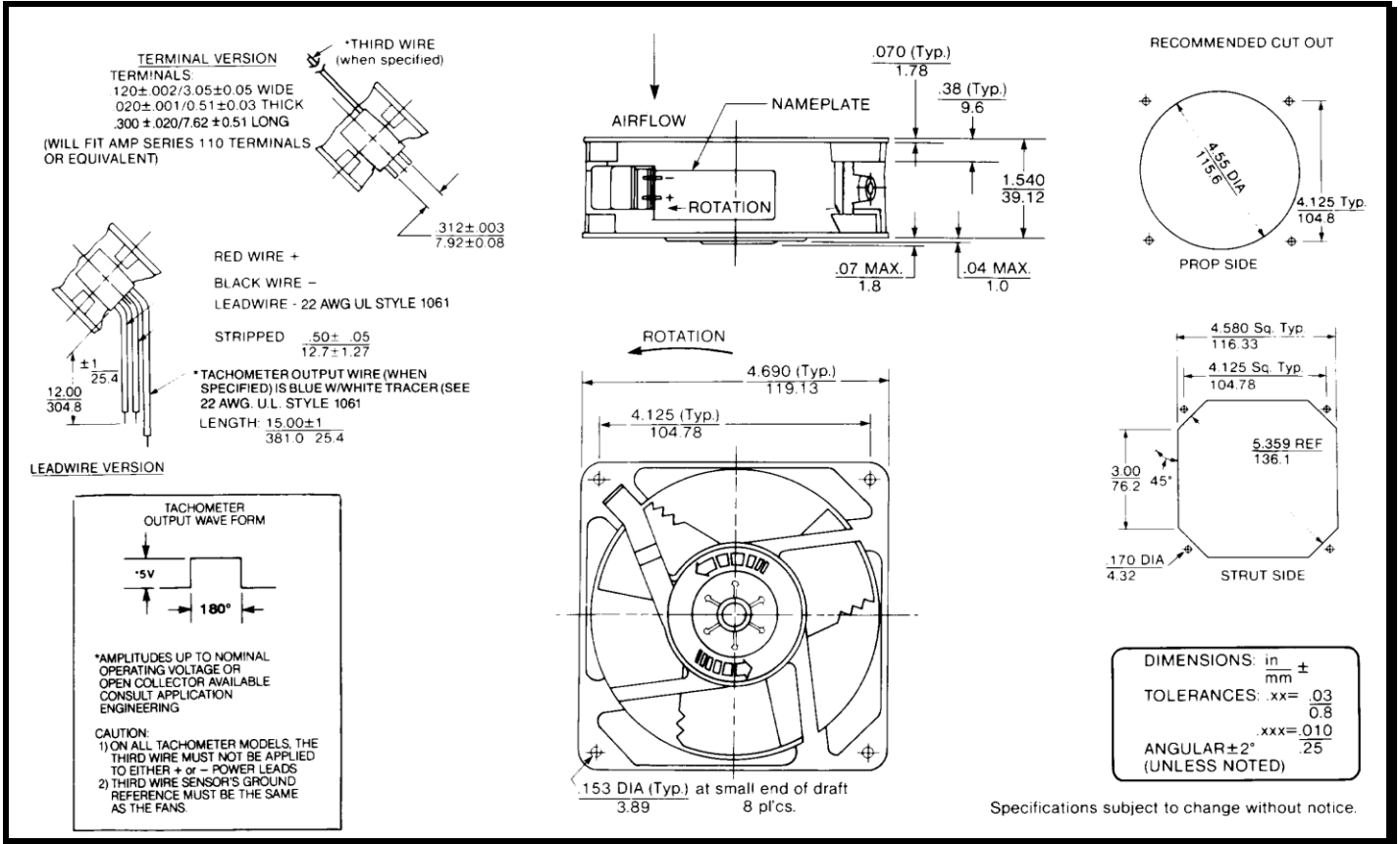
# SPECIFICATIONS



**Model Number:** WD48B3  
**Part Number:** 19030713A

**Version:** 01  
**Jan 12, 2018**

## Mechanical Drawing:



## Motor:

Nominal Voltage = 48 vdc  
 Operating Voltage Range = 24 – 56 vdc  
 Nominal Running Current = 0.09 amps  
 Locked Rotor Current = 0.24 amps  
 Running Power = 4.3 watts  
 Average Speed = 2450 RPM  
 Bearings = Ball  
 Air Flow = 84 CFM  
 Acoustic = 41.4 dBA

## Construction:

Venturi: Die-Cast Aluminum, Black  
 Propeller: Plastic, Black, UL 94V-0

## Life Expectancy:

This fan is designed for continuous duty life of 55,000 hours at 70°C.

## Additional Features:

Brushless DC Motor  
 Locked Rotor Protection  
 Polarity Protection  
 Automatic Restart Capability  
 Operating Temperature: -10°C to 70°C  
 Storage Temperature: -40°C to 85°C

## Termination:

12" Lead wires, 22 AWG, UL 1061  
 Red = Power (+)  
 Black = Ground (-)

## Agency Approvals:

UL, CUL, CE

PQ Curve:

